

Implementing a GACC Decision Support Center

Jason Loomis – NWCC Fire Analyst



The Decision Support Center Concept

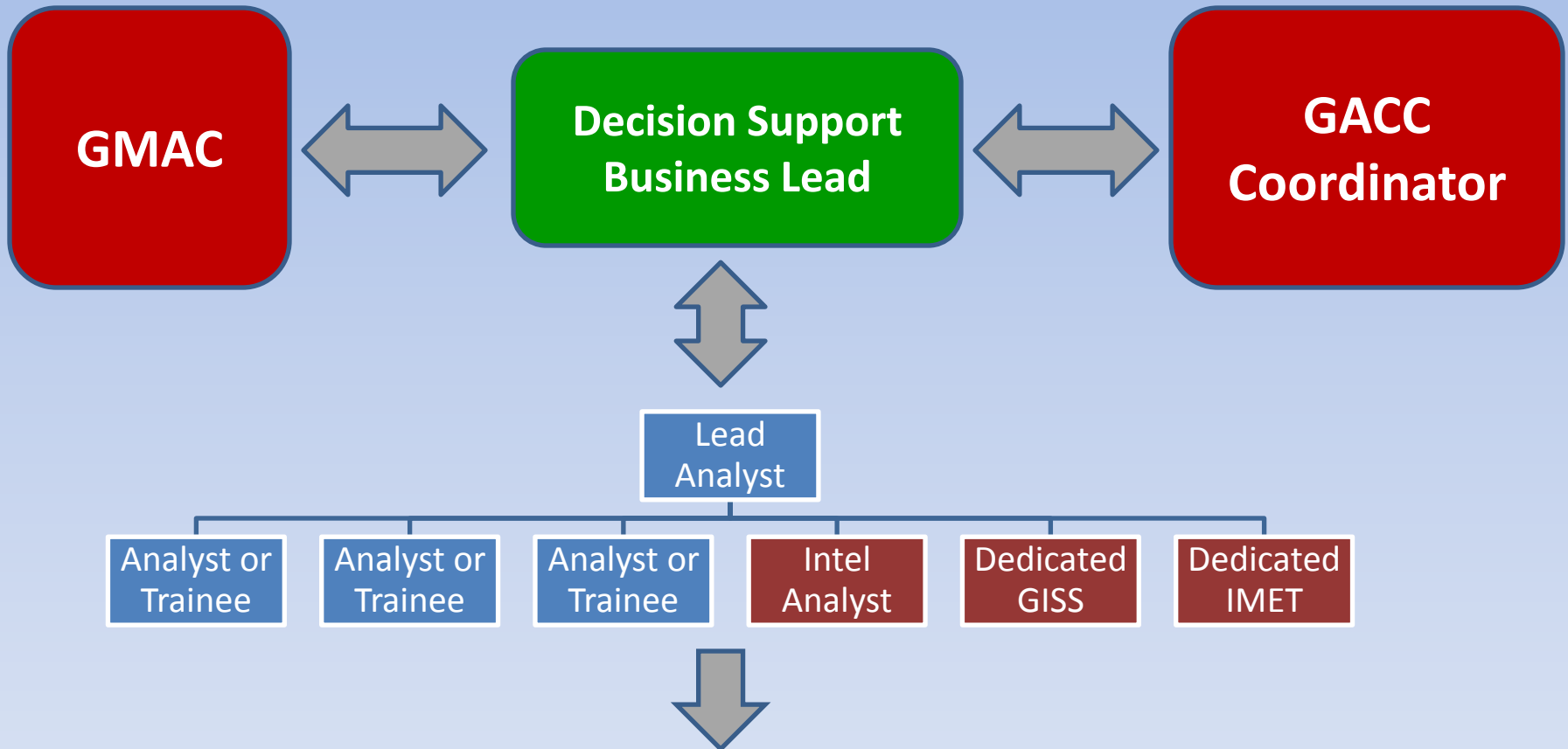
The DSC will:

- Activate during periods of moderate to heavy fire activity;
- “Plug & play” as a branch of the Predictive Services Unit;
- Provide full range of technical analysis to support strategic decisions on emerging incidents,
 - focus on short to intermediate time frames;
 - Intended to bridge gaps in local capability;
- Support GACC decision-making;
 - GACC Coordinator and GMAC decisions;
- Support technical analyses conducted at established incidents and local units;
- Function as a training ground for future fire analysts.

The DSC will NOT:

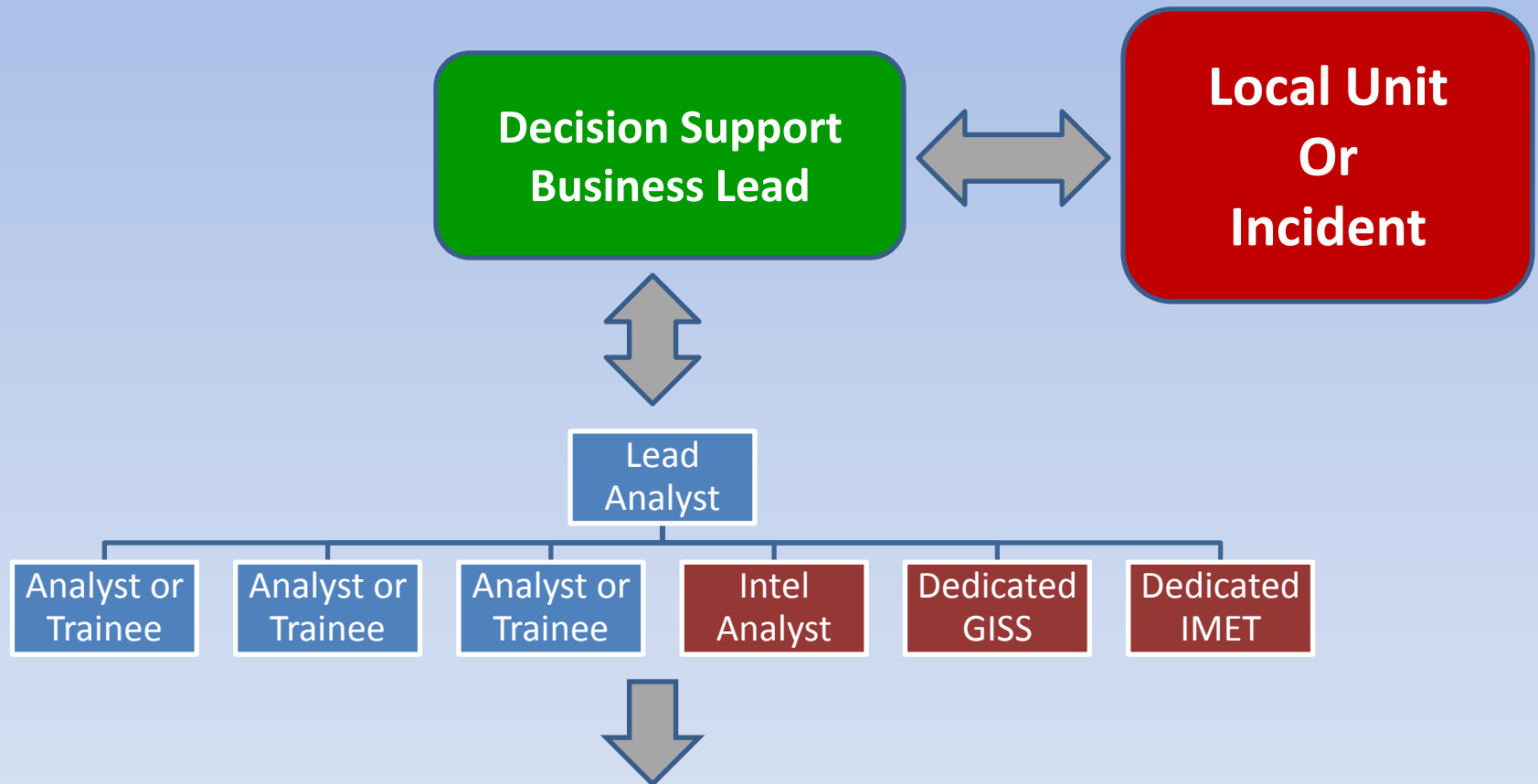
- Replace local expertise or manage incidents from afar;
- Conduct comprehensive long-term assessments or strategic implementation plans for individual incidents, units, or agencies;
- Complete WFDSS documentation;
- Generally provide technical WFDSS consultation or support.

Decision Support Center: GACC Operations



Products maintained in WFDSS, dedicated GACC files, GACC Incident ftp site, or delivered to local unit, as appropriate

Decision Support Center: Local Unit or Incident Operations



Products maintained in WFDSS, dedicated GACC files, GACC Incident ftp site, or delivered to local unit, as appropriate.

Decision Support Center Staffing

- Business Lead
 - Reports to Predictive Services; may also have WFDSS Geo-Editor capability;
- Lead Analyst
 - Reports to Business Lead; Experienced FBAN/LTANs: individuals listed on 14 day availability rotation;
- DSC Analyst
 - Reports to Lead Analyst;
 - FBAN/LTAN trainees;
 - Fire Behavior Specialists;
 - Fuels or other Resource Specialists with fire behavior modeling experience;
- Intel/GISS/IMET
 - Reports to Lead Analyst;
 - Qualified individuals

Activating the DSC:

Low to Moderate Planning Levels



Emerging Incident
Requests Support

Business Lead (pro-actively) orders FBAN/LTAN:

- Analysts works for Predictive Services Mgr;
- Provides analytical support to requesting units/incidents;

OR

Business Lead directs request to National Wildland Fire Decision Support Center:

- NFDSC coordinates analysis directly with requesting unit;
- NFDSC communicates work load and accomplishments with GACC Predictive Services Unit;

Activating the DSC:

Moderate and Greater Planning Levels

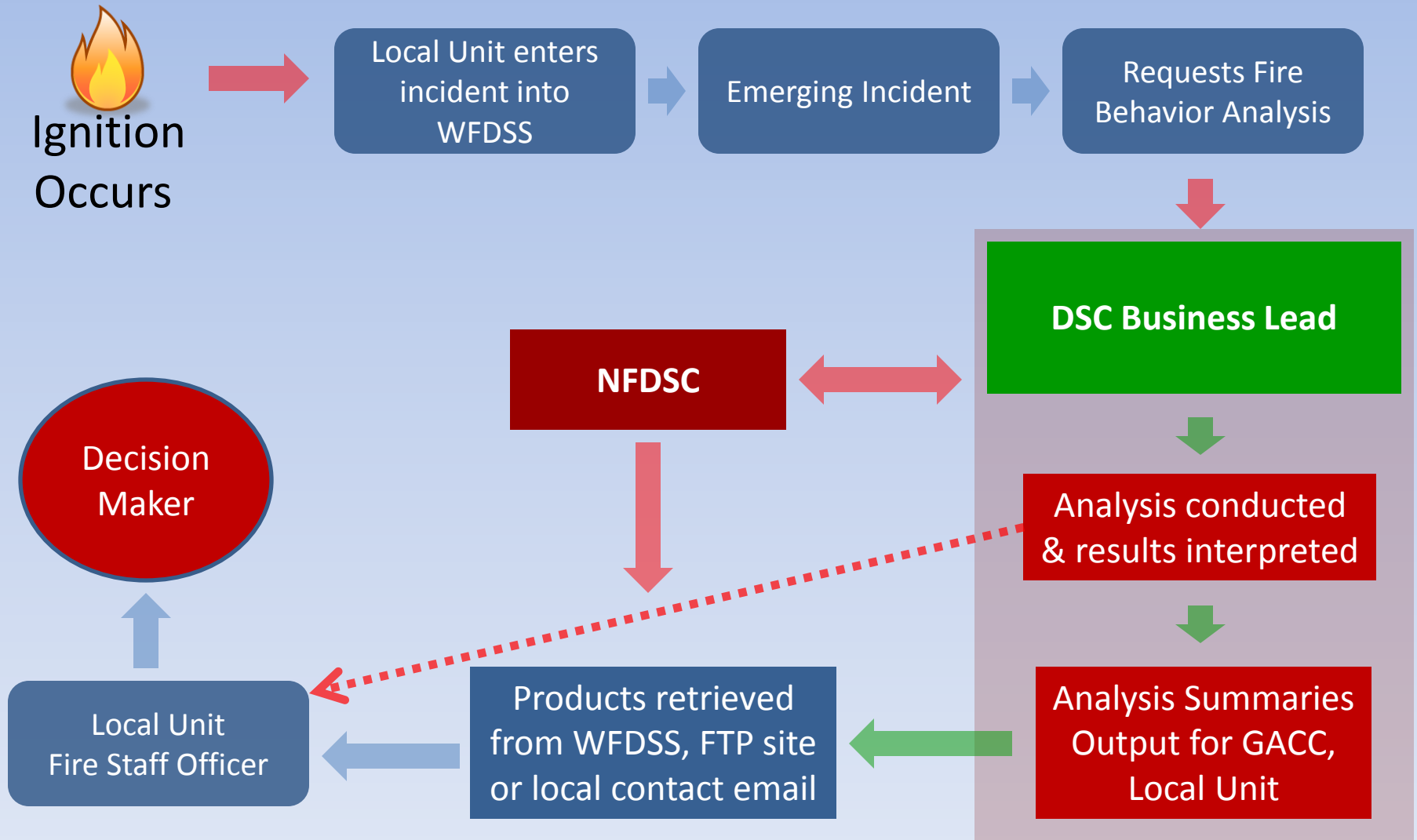


Anticipated Event

Predictive Services Unit, in concert w/ Coordinator and Center Manager, initiates mobilization:

- Anticipates workload 3 to 5 days out;
- Designates Business Lead and communicates to Dispatch Centers/Local Units;
- Orders Lead Analyst and DSC staff; establishes adequate work area and IT support;
- If Lead/DSC analysts not available locally, NFDSC may be contacted for virtual or onsite support. *A Lead Analyst is necessary whenever DSC analysts are located on-site.*

The Analysis Process



Wildland Fire Decision Support System National Preparedness Level: 3
Incident: NWCC_GDSC_Demo / 2011-

My Home Incidents Analyses Intelligence Data Management Administration

Information Situation Objectives Course of Action Validation Decisions Periodic Assessment Reports

Incident List

Fire Behavior Request

Stratified Cost Index

Relative Risk

Organizational Needs

FMU List

Mgmt Action Points

Shape Upload

Image Upload

Download KMZ

Download Perimeters

Contact Information

Incident Privileges

Incident History List

Incident Analyses

National ERC-G

Fire Related Links

Edit Incident Information

*Incident Name
NWCC_GDSC_Demo

Geographic Area Northwest Owner Name Loomis, Jason Transfer Ownership...

*Point of Origin Latitude Deg Min Sec 44.8572 or 44 51 25.9 *Point of Origin Longitude Deg Min Sec 121.038 or 121 2 16.8
Example: 39.527 Example: 105.3108

Unique Fire Identifier FireCode
2011 - - FireCode

Responsible Unit Name at Point of Origin
Deschutes National Forest

Incident Cause
 Unknown Natural Human

Is this a fire of National Significance?
 Yes No

Jurisdictional Agency Unit at Point of Origin
Not available

*Jurisdictional Agency(s)
 Bureau of Indian Affairs/Tribal
 Bureau of Land Management
 Fish and Wildlife Service
 National Park Service
 USDA Forest Service
 State
 County & Local
 ANCSA Corporations
 Other

Incident Size (acres)
1

*Discovery Date 07/01/2011 *Discovery Time 08:00

Containment Date Containment Time

Controlled Date Controlled Time

Out Date Out Time

Landscape Data Source
 Alaska LANDFIRE 1.0.0
 Alaska Refresh 2008 1.1.0
 CA Landscape 2010
 Hawaii LANDFIRE 1.1.0
 LANDFIRE National 1.0.0
 LANDFIRE Refresh 2008 1.1.0

Save

Requesting Analysis inside WFDSS

Fire Behavior Request

Wildland Fire Decision Support System National Preparedness Level: 3
Incident: NWCC_GDSC_Demo / 2011-

My Home Incidents Analyses Intelligence Data Management Administration

Information Situation Objectives Course of Action Validation Decisions Periodic Assessment Reports

Incident List

Fire Behavior Request

Stratified Cost Index

Relative Risk

Organizational Needs

FMU List

Mgmt Action Points

Shape Upload

Image Upload

Download KMZ

Download Perimeters

Contact Information

Incident Privileges

Incident History List

Incident Analyses

National ERC-G

Fire Related Links

Fire Behavior Request for 'NWCC_GDSC_Demo'

Desired Date 07/01/2011 Desired Time

Fire Behavior Needs
 Long Term Behavior (> 6 days) Short Term Behavior (1-3 days) Near Term Behavior (1-6 days)

*Rationale for Request

Please include any special areas of concern in your rationale for this request

Contact Information
Position Name
Phone Number E-mail Address

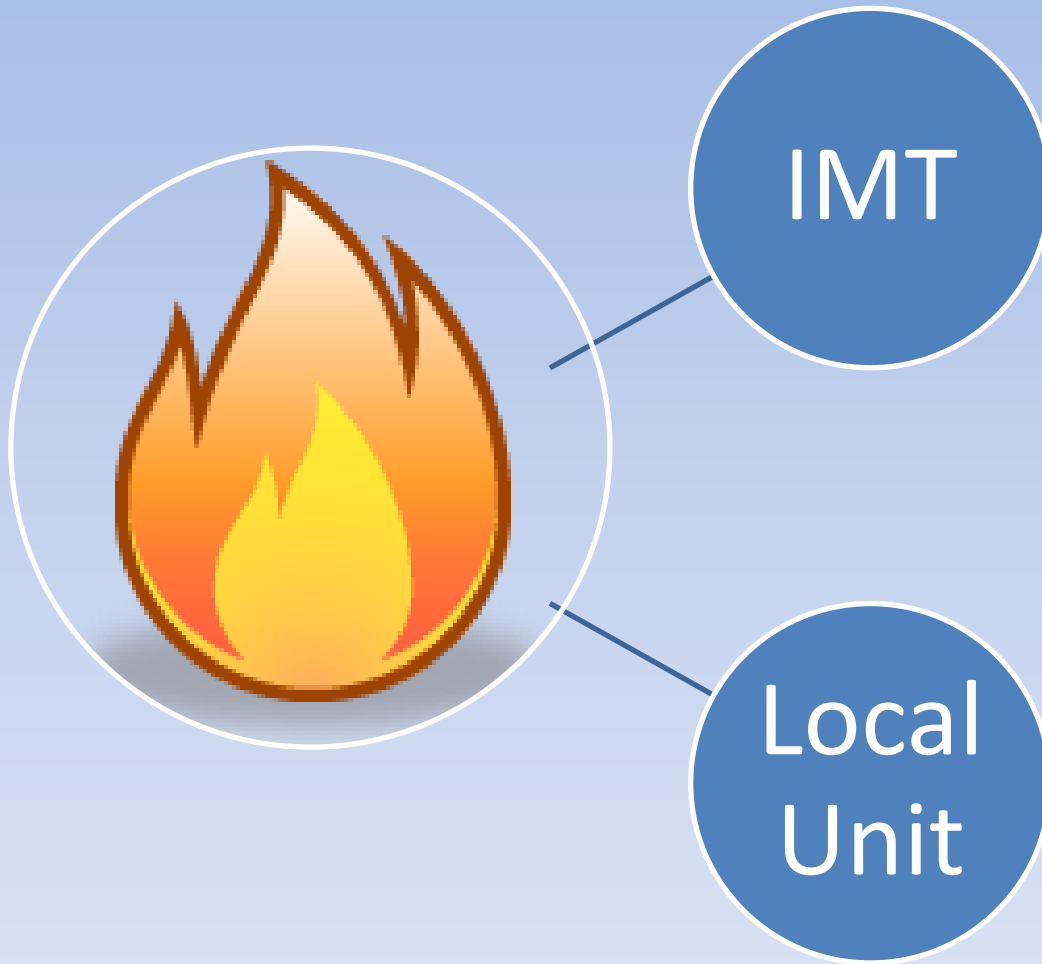
Add Contact to List

Position Name Phone Number E-mail Address
Edit Delete...

Submit Return

Select type of fire behavior analysis needed and provide brief rationale for request with contact information.

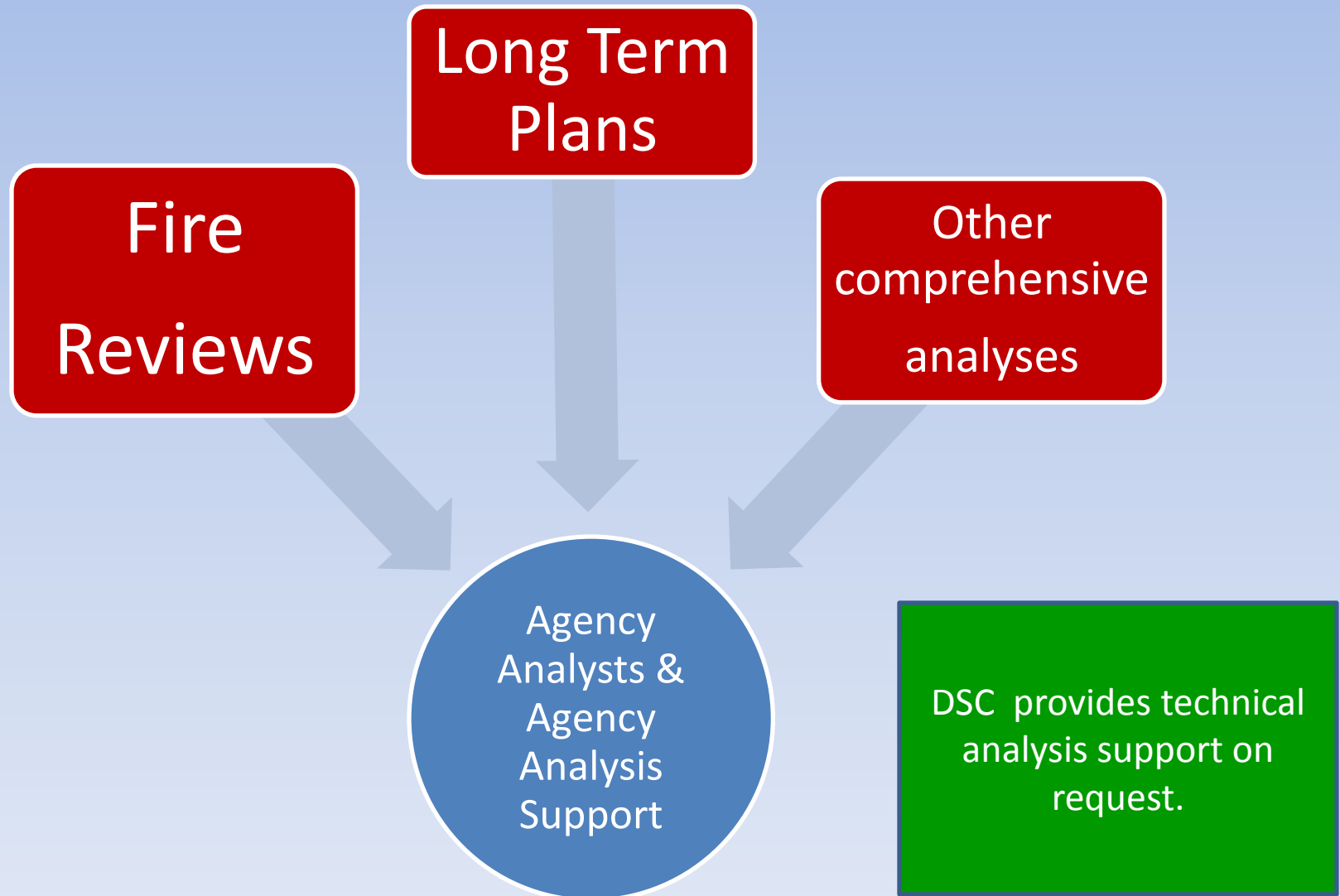
Decision Support on Established Incidents



- Incident FBAN/LTAN
- DSC supports on request

- Local SME or analyst;
- DSC supports on request

Comprehensive Incident or Agency Specific Analyses



Follow Naming Conventions

Example Incident Naming Convention:

Unit 3 Letter Designator_Incident Name_YrMoDay Incident Start Date

- Example:
 - **WWF_MinamPeak_200808118**
 - **NCP_Arctic_20080724**

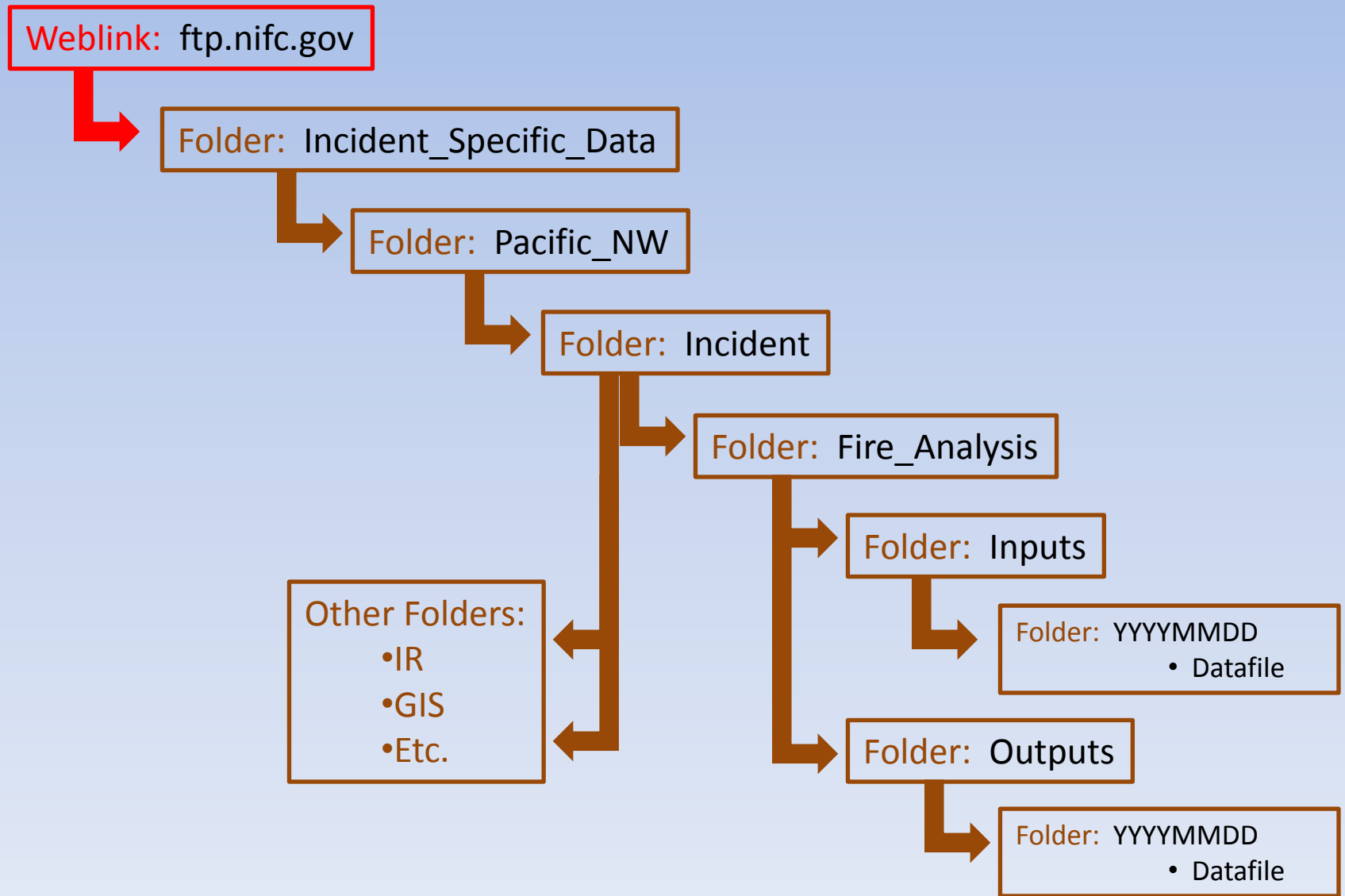
Incident Analysis Naming Convention:

YrMoDy Analysis Date_Analysis Duration_No. of Simulations_Ign Source_Other Analysis Factors

- Example:
 - 20080916_14Day_800Fires_0916AMPerim_NoBarriers
 - 20080821_21Days_1000Fires_0821IRPerim_LogCrkWind

Organize Filing Local/FTP

Filing Conventions



<http://www.wfmrda.org>

[Home](#)[WFDSS](#)[NFDCS](#)[News & Updates](#)[Partners](#)[Links](#)[Contact US](#)

Wildland Fire Management RD&A

If you are having trouble viewing this website try viewing it with Mozilla Firefox.

VISION

The Wildland Fire Management RD&A is a highly effective organization providing exemplary fire science integration and wildland fire management support to management agencies and personnel through proactive and timely response and in collaboration with partners.

The RD&A Program will sponsor and guide the development and application of wildland scientific knowledge; develop decision support tools; and provide science application services to the interagency wildland fire community.

MISSION

The RD&A Program will sponsor and guide the development and application of wildland scientific knowledge; develop decision support tools; and provide science application services to the interagency wildland fire community.

The RD&A Program will serve as a primary point of contact for communication between scientists and participating field managers, and as an advisor to program administrators at local, regional, and national levels.

With integrity, professionalism, safety, and mutual respect as our core values, we serve as leaders, role models, and mentors within our resource management agency.

Questions?

Jason Loomis – NWCC Fire Analyst

jloomis@blm.gov

Office: 503-808-2733

