

# NWCC Fire GIS Information

## Fire Season 2009

May, 2009

### **Important Northwest Contact Information**

**NWCC GIS Staff**  
**Kim Kelly**  
**503-808-2741**  
**Barbara Haney**  
**503-808-2779**

[http://www.nwccweb.us/  
predict/gis.asp](http://www.nwccweb.us/predict/gis.asp)

**State Office**  
**Regional Office**  
**Fire and Aviation**  
**Dale Guenther**  
**503-808-2188**

[http://www.fs.fed.us/r6/  
ire/](http://www.fs.fed.us/r6/ire/)

### Pages

- 1 - NWCC Website
- 2 - [FTP.NIFC.GOV](http://ftp.nifc.gov)
- 3 - Links to Data
- 4 - Reminders  
*FIMT*
- 5 - NIROPS
- 6 - Retardant

Hello All -

It's that time of year again and although the Northwest Wildfire Season is off to a slow start, we wanted to remind you of some important procedures and provide you with some useful links and information that can help support you and your incident this fire season.

The PNWCG GIS Working Team has been hard at work over the Winter to update related fire and aviation GIS data, purchase new harddrives for incidents, upload current raster information, and respond to many of your requests from last season.

Thank you for your feed back! Thank you GISWT!!!

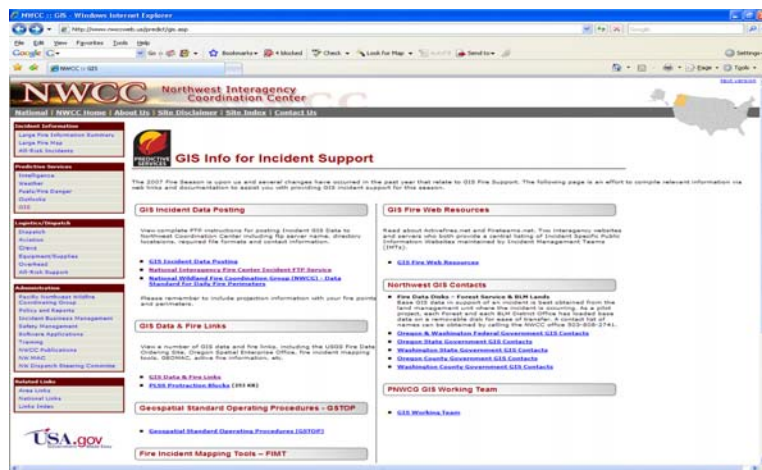
## **Support - Fire Season 2009**

The NWCC GIS Office will be staffed with two permanent employees and a student this season (as well as interagency detailers depending on the Season). Staffing will be 7 Days a week, 10 to 12 Hour Days beginning June 21st.

Please feel free to contact us if you have questions. Our Website is as follows:

## **NWCC GIS Webpage**

[www.nwccweb.us/predict/gis.asp](http://www.nwccweb.us/predict/gis.asp)

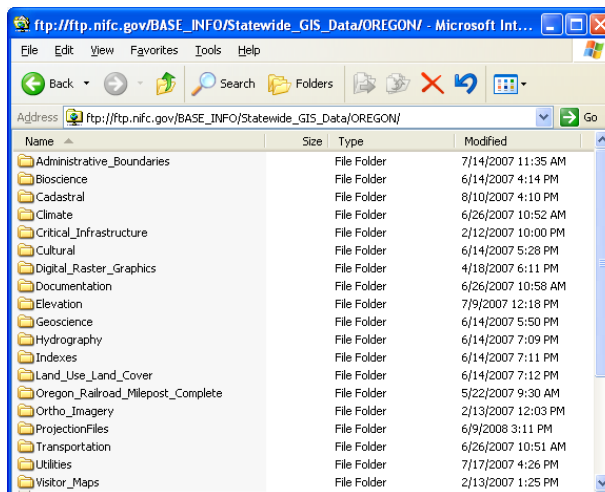


## Locating GIS Data for your Incident

- The primary source of current GIS information for your incident should be the Land Management Unit the fire is located on. Many of the Federal Land Management Units (FS/BLM) have been provided large capacity harddrives to place much of their base GIS data on in support of incidents. If you are unable to locate a local contact on the unit call the NWCC GIS Dept 503-808-2741 to obtain contact information for the disk.

***Disk Drive Replacement- FS/BLM have more disks and larger disks to meet your data transfer needs. If there are issues with the project please contact Dale Guenther 503-808-2188.***

- Oregon and Washington Base Data has been placed on the [ftp.nifc.gov](http://ftp.nifc.gov) site under the following links:  
(DRGS, DEMS, Ortho Imagery, Transportation, Hydrography, Indexes, Cadastral, etc.)  
[ftp://ftp.nifc.gov/BASE\\_INFO/Statewide\\_GIS\\_Data/OREGON/](ftp://ftp.nifc.gov/BASE_INFO/Statewide_GIS_Data/OREGON/)  
[ftp://ftp.nifc.gov/BASE\\_INFO/Statewide\\_GIS\\_Data/WASHINGTON/](ftp://ftp.nifc.gov/BASE_INFO/Statewide_GIS_Data/WASHINGTON/)



- USGS Rapid Data Delivery System - <http://firedata.cr.usgs.gov/>
- NRCS Data Clearinghouse - <http://datagateway.nrcs.usda.gov/>
- Canadian Trim Vector Data can be located on the following link:  
[ftp://ftp.nifc.gov/BASE\\_INFO/Statewide\\_GIS\\_Data/WASHINGTON/CANADA\\_BC/Canada\\_Data\\_Vector/](ftp://ftp.nifc.gov/BASE_INFO/Statewide_GIS_Data/WASHINGTON/CANADA_BC/Canada_Data_Vector/)
- Aerial Hazards Data- <http://www.nwportal.fs.usda.gov>
- Aerial Hazard Maps - [ftp://ftp.nifc.gov/Incident\\_Specific\\_Data/PACIFIC\\_NW/ISORO/Aviation\\_Hazards/2009](ftp://ftp.nifc.gov/Incident_Specific_Data/PACIFIC_NW/ISORO/Aviation_Hazards/2009)
- Powerlines BPA, Gas Pipeline, T&E Species, and limited Structure Data can be obtained by calling the NWCC Staff. (503) 808-2741 or (503) 808-2779  
***This information is sensitive and can not be posted on the ftp site.***

## FTP.NIFC.GOV

As with previous fire seasons we ask that all new fire perimeters and IAP maps be posted to the [ftp.nifc.gov](http://ftp.nifc.gov) site in the appropriate incident folder. I'm pleased to announce that the Northwest has led all Geographic Areas in the percentage of large fire perimeters received from incidents each year. Last year you provided 95% of all large fires during the active fire period. Thank you for your efforts in making this happen.

The process for posting Incident GIS data and maps on [ftp.nifc.gov](http://ftp.nifc.gov) will remain the same this fire season. We ask that you follow the following guidance this season:

- 1) The [ftp.nifc.gov](http://ftp.nifc.gov) guidance for folder creation (see graphic below),
- 2) The NWCG Daily Fire Perimeter data standard  
[http://www.nwcg.gov/teams/pmo/products/standards/gdl\\_fire\\_perimeter/cover.htm](http://www.nwcg.gov/teams/pmo/products/standards/gdl_fire_perimeter/cover.htm)
- 3)
- 4) GISS Standard Operating Procedures Manual <http://www.nwcg.gov/pms/pubs/GSTOP7.pdf>

Please visit the <http://ftpinfo.nifc.gov/index.htm> website for guidance and information about the [ftp.nifc.gov](http://ftp.nifc.gov) service.



**National Interagency Fire Center**

Home Page  
Documents  
Web Interface  
Directory Structure  
Help  
FAQ  
Links  
Disclaimers  
NIFC

Page last updated: 04/21/2008

**Welcome to the National Interagency Fire Center Incident FTP Service**

This webpage provides useful information and instruction for using this site

**NEWS!**

Recently National Multi-agency Coordination Group (NMAC) established policy that Incident Action Plan (IAP) information will be posted in a secure folder. IAPs should no longer be posted in folders with anonymous read access. To facilitate sharing these documents a separate folder under each Geographic Area Coordination Center (GACC) folder has been established. This new folder will be called "GACC Support". A login ID and Password for this folder will be needed for read access. Contact your GACC (link) or the ftp Helpdesk (Link). This folder may be used for contract or other sensitive incident information.

Need help with the ftp site? You can call the NWCC Coordination Center and the Fire Applications Help Desk to obtain a user name and password, as well as gain assistance with the site.

NWCC – 503-808-2741 or 503-808-2779

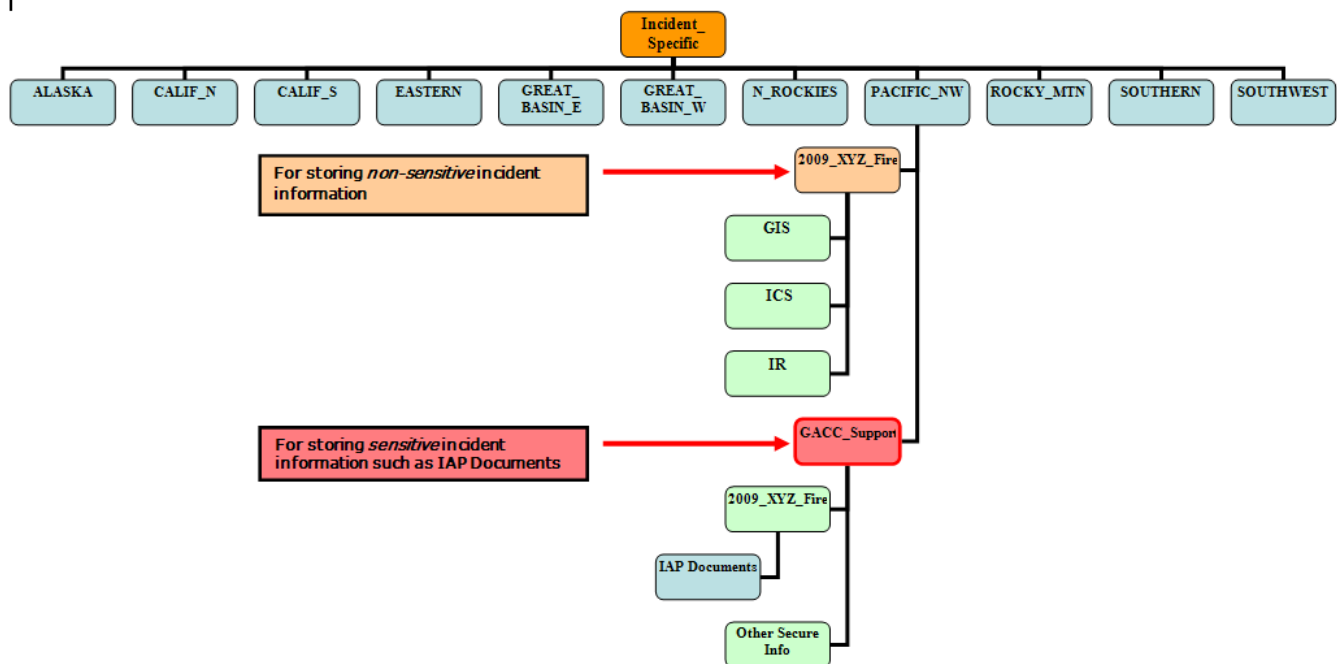
Fire Applications Help Desk – 1-800-253-5559 or [fire\\_help@fs.fed.us](mailto:fire_help@fs.fed.us)

## Reminders this season

**GACC\_SUPPORT FOLDER** - Recently National Multi-agency Coordination Group (NMAC) established policy that Incident Action Plan (IAP) information will be posted in a secure folder. IAP Documents should no longer be posted in folders with anonymous read access. To facilitate sharing these documents a separate folder under each Geographic Area Coordination Center (GACC) folder has been established. This new folder will be called "GACC Support". A login ID and Password for this folder will be needed for read access. Contact your GACC (link) or the ftp Helpdesk (Link). This folder may be used for contract or other sensitive incident information.

Note you can still post your IAP Maps under the GIS folder as long as there is no sensitive information provided, but **ALL IAP DOCUMENTS** need to be posted within the GACC\_Support folder.

2009 Incident Directory Structure Diagram



## Fire Incident Mapping – FIMT

FIMT Software – [http://www.fs.fed.us/r2/spf/fire\\_incident/index2.shtml](http://www.fs.fed.us/r2/spf/fire_incident/index2.shtml)

**FIMT 9.2/9.3 compatible version is available – a newer release specifically for 9.3 should be available within the next week at this same link.**

### Why should I use FIMT if I already have strong GIS skills?

The FIMT toolset encourages and supports standardization for map making, data collection and analysis commonly performed on fires. As incidents are handed off from one team to the next, or from the local support staff to a team, it is critical that the new GIS support group be able to get up to speed fast and be able to supply maps and tactical information within hours... or less. By using a common set of tools, templates and feature symbology, a new team should be able to understand the data and produce products almost immediately. Not only is it important when changing teams, it is important when changing shifts or when a new person is being assigned to work with your team on an already active incident. You will never appreciate this fact more than when you are the new person or when you have the 4am shift and have only a couple of hours to crank out those morning maps with the last minute changes that most certainly will come.

## ESRI Emergency Licensing Information

You should be equipped with a laptop and appropriate software when ordered to an incident (review your agencies requirements for obtaining a fire laptop). However things do happen and you may have a need to obtain an emergency license from ESRI if so please follow the link below.

<http://gis.esri.com/events/assist/index.cfm?eventID=117>

To request emergency software assistance from ESRI, complete the appropriate sections below and submit. All requests for assistance should be thoroughly justified and show direct support for the disaster. All requests are subject to review and approval.

## Additional News

### Plotter or Satellite Communication Rental -

Contact Dale Guenther 503-808-2188 or the NWCC GIS Staff 503-808-2741.

### Remote Sensing News (IRIN) News -

There have been two changes to the National Infrared Operations program that may affect GIS on incidents this year.

The Infrared Downlink Kits have been reworked and converted into Infrared Interpreter kits. If the IRIN assigned to an incident needs a laptop computer to work on, they can order an IRIN tool kit from the cache at NIFC (Item number NFES 4800). The kit comes with a laptop computer loaded with the standard BLM image, ArcMap 9.3 and comes with an external hard drive preloaded with 1:24,000 DRG's for the western United States. The kits can only be ordered by an IRIN who is assigned to an incident. The other big change is in the imagery delivery system. Both NIROPS aircraft have been outfitted with Aircell technology which will allow the flight crew to transmit IR data to NIFC while still in flight. This will allow the imagery to be uploaded to the ftp site and acquired by the IRIN much faster than the old system of having to wait for the plane to land, hand off the imagery and then make it accessible to the IRINs. This change should allow us to fly more fires each night and get the imagery to the IRINs faster. The end result, we hope, is that GIS will receive interpreted shapefiles sooner than in the past. One final note, we trained about 25 new IRIN's this off-season, many of whom come from the ranks of the GIS world. We expect great things from this class of IRIN-trainees, but they have just begun their education so be gentle with them.

***Randy Herrin- National Infrared Operations Regional Coordinator, Oregon/Washington***

### ROSS Status and Availability

As many of you know, there is already smoke in the air in other parts of the country. As with each season we remind folks to make sure they know what their STATUS is in the Resource Ordering and Statusing System (ROSS).

- If you have your supervisors approval, and are available for assignments be sure that you are made AVAILABLE in ROSS, and that you show your STATUS as either LOCALLY, REGIONALLY, or NATIONALLY Available. This is done by working with your local dispatch office.

[http://www.nwccweb.us/admin/dispatch\\_map.asp](http://www.nwccweb.us/admin/dispatch_map.asp)

### ArcGIS Software Version 2009 -

This question comes up each season and it's difficult for Interagency Fire GIS folks (both Nationally and Regionally) to make a "standard" as to what software is going to be used for the Fire Season that year. Each Agency implements their own schedule for software release and installation that the Fire business community has little control over.

**What we know:**

- Each Federal Agency within the Oregon and Washington Geographic Area has released ArcGIS 9.3 and is available for installation.
- Oregon Department of Forestry (ODF) has released ArcGIS 9.3
- Washington Department of Natural Resources (WADNR) will be using ArcGIS 9.2 for this Fire Season.
- It has been recommended that GIS Contractors and Contract Computers have ArcGIS 9.3 Installed for this Season.
- FIMT has a release for both ArcGIS 9.2 and ArcGIS 9.3 - [http://www.fs.fed.us/r2/spf/fire\\_incident/index2.shtml](http://www.fs.fed.us/r2/spf/fire_incident/index2.shtml)

**What we don't know:**

- Whether each Agency has installed, or will have installed ArcGIS 9.3 and ready for operational use on each Fire Laptop and Local Unit for this Season.

**The best recommendation that the PNWCG GIS Working Team can provide to the field is:**

- Be prepared to manage potential incompatibilities between ArcGIS software versions this season.
- Be familiar with your Agencies policies for distribution of - Software DVD's, External Harddrives, or Web links to your Agencies Software Version Release and Installation Instructions.
- Be prepared to call ahead to the incident to find out what is being used to produce geospatial products.
- Review how each software version is compatible with the other - [http://webhelp.esri.com/arcgisdesktop/9.3/index.cfm?TopicName=Client\\_and\\_geodatabase\\_compatibility](http://webhelp.esri.com/arcgisdesktop/9.3/index.cfm?TopicName=Client_and_geodatabase_compatibility)
- Review the current FIMT News and Release Information [http://www.fs.fed.us/r2/spf/fire\\_incident/index2.shtml](http://www.fs.fed.us/r2/spf/fire_incident/index2.shtml)

**Retardant monitoring for T&E and Waterbodies**

It is national policy for BLM and FS that every effort must be made to keep retardant out of waterways and T&E critical habitat sites. We are compiling these locations now and will make them available to flight crews and Incident Command Teams for planning purposes. If a spill does occur in these areas then monitoring by the host unit is required. Forms to document these areas are available, as well as a web site. Please contact Dale Guenther for more information.

**Expanded Dispatch Kits**

The expanded dispatch kits have been upgraded with new computers. The DRM staff will image these and make them available for pick up July 1. For more information contact Dale Guenther.

# Have a safe season!

